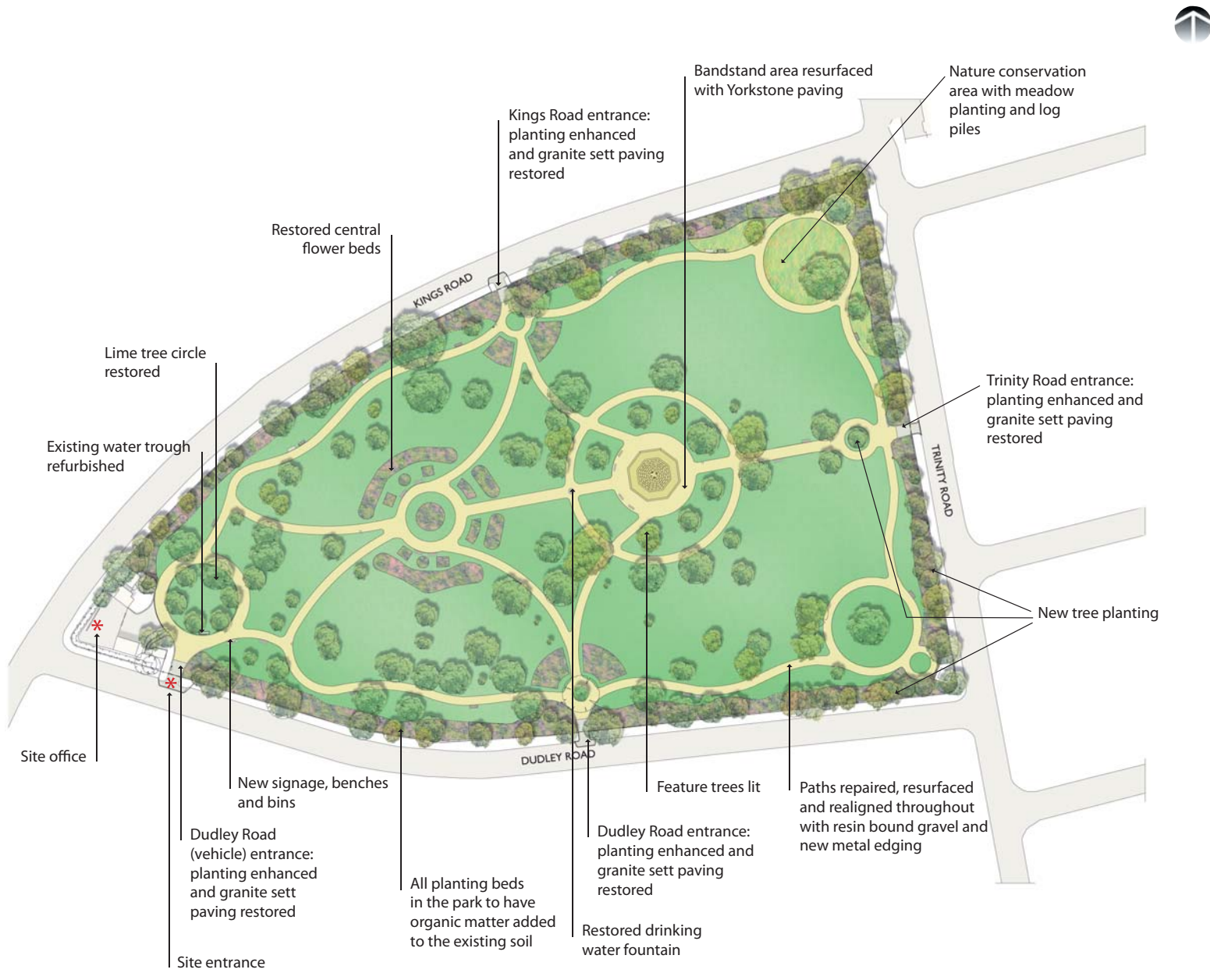


Restoration of South Park Gardens

Contractors will be carrying out restoration works on the park until early summer 2009. During this time the park will be closed to the public. The park will reopen again when the works are completed.

Restoration plan



For more information about the works please contact:

London Borough of Merton
 Chris Mountford
 Project Officer for the LBM
 Douglas Napier
 Greenspace Manager
 Merton Civic Centre
 London Rd
 Morden SM4 5DX
 Tel: 020 8545 3657

Hortech Ltd (main contractor):
 The Long Barn
 Moddershall, Stone
 Staffordshire
 ST15 8TQ
 David Furniss (Office Contact)
 Tel: 01785 818080
 David Charlesworth (Site Contact)
 Tel: 07807 588098

The lead design consultant is:
 Land Use Consultants
 43 Chalton Street
 NW1 1JD

The Friends of South Park Garden:
 Jil Hall
 Park Community Warden
 66 Kings Road,
 Wimbledon
 London SW19 8QW
 Tel: 07742 633760
www.southparkgardens.org

The restoration of the park is funded by the Heritage Lottery Fund, Merton Council and sources which have been successfully secured by local residents who form the Friends of South Park Gardens.

Thank you and apologies for any inconvenience caused

